

# Discover Intensive Phonics

## Things You Need to Know

### What Is *Discover Intensive Phonics for Yourself*?

*Discover Intensive Phonics for Yourself* is an explicit, systematic phonics program employing a multi-sensory approach to teaching basic word attack/reading skills. Based on the Orton-Gillingham principles of instruction, *Discover Intensive Phonics* is flexible in its presentation and can be used in the mainstream classroom for whole-group instruction, as a remediation program for small-group instruction (Special Education [SPED] or Response to Intervention [RTI]), and with ESL/ELL students. For more-detailed information on each of the following topics, please see the Web site links listed.

### How Is *Discover Intensive Phonics* Taught?

The program is taught through multi-sensory, direct instruction, helping students internalize decoding/word attack strategies for more-accurate and fluent reading. Phonics lessons can be reinforced through the use of *Discover Intensive Phonics* computer software. Computerized lessons, practice sessions, and phonics activities correlate with every classroom lesson for individualized skill reinforcement.

*Discover Intensive Phonics* overview: <http://www.readinghorizons.com/solutions/materials/markets/elementary.aspx>.

### Who Is “Our Student?”

- Children ages four to nine
- Kindergarten through third grade regular classroom and whole-group instruction
- Kindergarten through sixth grade SPED and small group instruction
- Response to Intervention (RTI) programs - all three tiers
- Learning disabled, including dyslexic
- English Language Learners

### How Often Do I Teach, and How Long Does It Take to Complete the Program?

- *Discover Intensive Phonics* lessons are designed as a supplement to any reading curriculum in the regular classroom or as a K-6 intervention/SPED tool. Daily instruction ranges from 20 to 60 minutes, depending on student age/grade level. However, the amount of time teachers spend teaching any concept should be based on the school district’s language/arts requirements and the ability of their students to master that concept. The Web links below provide additional timeline information.
- K-2nd grade students receive direct instruction and participate in multi-sensory, interactive activities from 20 to 60 minutes daily for the entire school year.
- 3rd grade students spend 20-30 minutes daily reviewing phonics previously taught, with increased practice of spelling/grammar skills, parts of speech, and exceptions found in Volume 2 of the teacher materials. If 3rd grade students have completed *Discover Intensive Phonics* K-2, they will most likely complete their review and study within four months.

- 4th through 6th grade intervention/SPED/RTI: direct instruction and computer software can be combined to meet the needs of at-risk students. The amount of direct instruction time devoted depends on available teacher time. Use the Web link below for timeline suggestions.
- Correlated computer software lessons average 18 minutes each and provide excellent individual skill reinforcement.

Timeline: <http://www.readinghorizons.com/community/timeline.aspx>

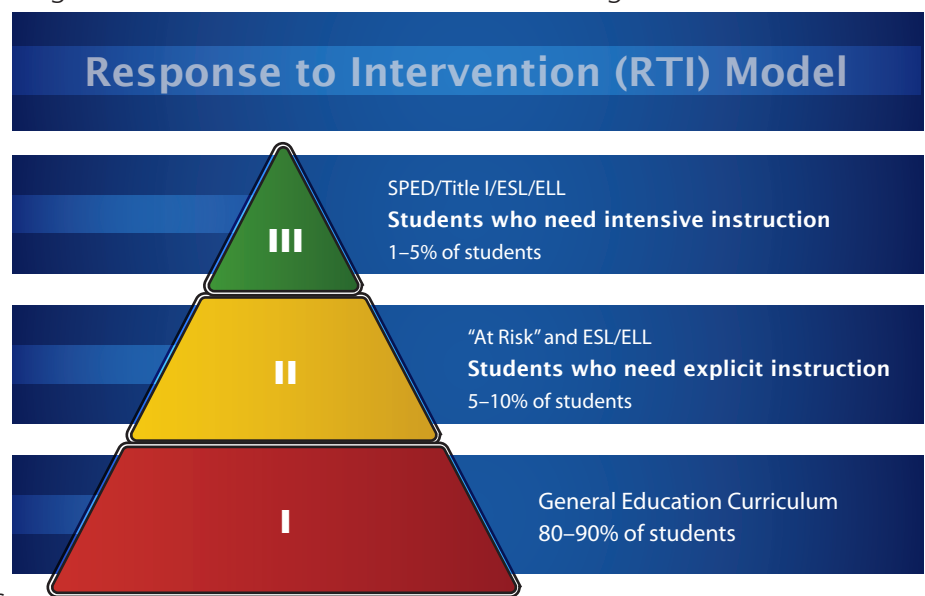
Implementation: <http://www.readinghorizons.com/solutions/materials/implementation.aspx>

RTI: <http://www.readinghorizons.com/solutions/markets/rti.aspx>

### How Does *Discover Intensive Phonics* Meet the Needs of Special Education, RTI, ESL/ELL?

- *Discover Intensive Phonics* can play a major role in each of the three **Response to Intervention** (RTI) tiers. If used for all three tiers, students in tiers II and III will have the benefit of receiving the same instruction and using the same materials as students receiving universal instruction

- just in a more closely monitored, more-intense instructional setting. The following Web site features a Webinar (Web-based seminar) conducted by Stacy Hurst (Iron County, Utah) explaining **how to adapt *Discover Intensive Phonics* in all three tiers**. The Webinar is titled "Creating Synergy between Mainstream Reading Instruction and Special Education."



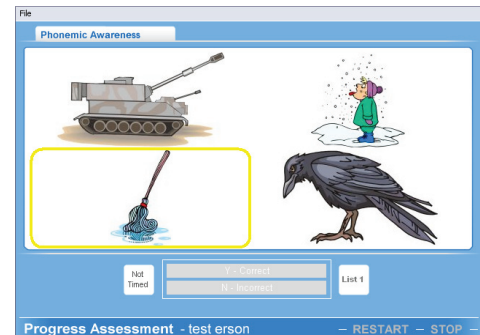
- *Discover Intensive Phonics* offers the capability to reach **at-risk** students in small-group situations while still offering the ability to "tailor-fit" the lesson sequence to more-advanced readers in a whole-group setting. Students suffering from **dyslexia** or other **learning disabilities** have a crucial need for an explicit, systematic phonics program. The simple-to-complex sequence of *Discover Intensive Phonics*, along with its multi-sensory marking system and emphasis on phonemic awareness, makes this program ideal for students with special needs.
- *Discover Intensive Phonics* teaches **ESL/ELL students** the structure of the English language and can dramatically improve their pronunciation, reading, and spelling skills. The ability to individualize the program allows ESL/ELL teachers to meet the needs of each student. The software program contains a special pronunciation section, which allows students the capability of recording their voice as they pronounce sounds/words and then compare their pronunciation with that of the narrator's.

*Discover Intensive Phonics* as Response to Intervention RTI: <http://www.readinghorizons.com/landing/rti.aspx>.

## How Does *Discover Intensive Phonics* Track Student Progress?

*Discover Intensive Phonics* software features four excellent assessments:

- Grade level placement
- Most Common Word (sight word) Assessment
- A **DIBELS-like assessment** that measures the progress of students' pre-reading and early reading skills. It assesses a student's ability to read nonsense words and allows the administrator to identify any weakness in individual phonemes, vowel sounds, and/or word patterns.
- A **Phonemic Awareness Assessment** tests for rhyming; initial, medial, and final consonant sounds; blending; syllable identification; and phoneme isolation.
- The *Discover Intensive Phonics* Teacher's Kit provides skill-based assessments included in the direct instruction materials. Both independent, full-class Section Assessments and one-on-on Mastery Checks allow teachers to identify specific problem areas in phonics and reading.



## How Do I Use *Discover Intensive Phonics* with Our Existing Reading Curriculum?

The detailed/scripted lessons in the *Discover Intensive Phonics* teacher's manuals are easy to adapt and correlate with the daily phonics lessons provided in the teacher's editions of your current reading curriculum. *Discover Intensive Phonics* will reinforce and embed phonics concepts, empowering students not only in decoding and word attack skills but also in spelling, grammar, and reading fluency strategies. **Correlations for most of the popular basal reading series** can be found at the link listed below. Sample lesson plans demonstrate how to implement *Discover Intensive Phonics* lessons and correlate student materials with most basal phonics programs. Teachers have the additional benefit of being able to ask questions of seasoned teachers through our online "Ask the Experts" forum. In addition to asking their own questions, they can review all other questions and responses posted that might be of benefit.

Correlations: <http://www.readinghorizons.com/community/implementation/indx.aspx>

Sample Lessons: <http://www.readinghorizons.com/community/basal.aspx>

Ask the Experts: <http://www.readinghorizons.com/community/forum/category.aspx?id=15>

## What Type of Improvement Can I Expect?

In elementary schools nationwide, students of all ability levels have shown advancements averaging one or more grade levels in a single year using this revolutionary approach. Through direct instruction, logical sequencing, and multi-sensory techniques, *Discover Intensive Phonics* accomplishes the primary goal of phonics instruction: decoding and recognizing words with automaticity. Students not only read above grade level, but they simultaneously improve their spelling, vocabulary, grammar, handwriting, and listening skills.

## Training for Teachers

Appropriate teacher training is very important in maximizing the use of this empowering program. With the professional development we provide, teachers are taught a strong foundation in decoding, spelling, and reading strategies. The following is a list of suggested training options:

- Live Workshops - Our dynamic workshops show how to teach phonics and model the methods and tools that will ensure reading success in your classroom. The workshops guide attendees, using a "hands-on," step-by-step approach of the *Discover Intensive Phonics* program. Embedded within the hands-on workshop is a brief orientation to the *Discover Intensive Phonics* software. Teachers are taught how to correlate the software with their direct instruction lessons and how to track student progress using the Administration system.
- Online Workshop - The Online Workshop was not intended to be used as an alternative to attending a live, hands-on training, but should be utilized by workshop attendees for reinforcement and review. This interactive workshop uses full-motion video and flash animation and allows intermittent practice to embed and internalize *Discover Intensive Phonics* principles. A syllabus is printed at the beginning of the four-to-five hours of training, and a certificate of completion is provided at the end. The workshop is bookmarked for convenience and may be accessed free of charge for 30 days.
- Software Orientations - Online software orientations, accessed through the Reading Horizons Web site, provide a one-hour overview of key software functions and tips for teachers and administrators.

Professional Development: <http://www.readinghorizons.com/solutions/training/markets/elementary.aspx>

Online Workshop: <http://www.phonicstraining.com>

Software Orientations: <http://www.readinghorizons.com/community/index.aspx>

## Other

Company Web site: [www.readinghorizons.com](http://www.readinghorizons.com)

Company History: <http://www.readinghorizons.com/company/history.aspx>

Methodology: <http://www.readinghorizons.com/method/index.aspx>

Supporting Research: <http://www.readinghorizons.com/research/markets/elementary.aspx>

**Questions?** Please feel free to contact us:

Phone support: **800-333-0054** Online support: [readinghorizons.com/support/index.aspx](http://readinghorizons.com/support/index.aspx)